



Sage XRT Treasury

Version 4.3.0

Setup Guide



Contents



Overview	3
Recommendations	3
File Content	4
First Installation	5
Documentation	10
Creating Databases.....	10
Using an Existing Database.....	10
Creating User and Granting Privileges.....	10
License Management	10
Updating Previous Versions	11

Overview

This document describes the installation process of **Sage XRT Treasury 4.3.0**.

Recommendations

Sage XRT Treasury is a 32-bit version.

This version only and fully operates with 64-bit versions of **Sage XRT Common Services** and **Sage XRT Bank Format Library**.

Install **Sage XRT Treasury** products in the following order:

1. **Sage XRT Bank Format Library 4.6.100**
2. **Sage XRT Common Services 5.1.103**
3. **Sage XRT Communication 4.2.1**
4. **Sage XRT Signature 4.2.1**
5. **Sage XRT Treasury 4.3.0**

You must be the **Administrator** of the stations to perform installations.

The **User Account Control** of the station/server must be deactivated during installation.

You must have all privileges on folders related to **Sage XRT Treasury** application.

Back up your data before upgrading any application.

Before **Sage XRT Treasury** installation, all other applications must be closed.

The database engine must be installed and activated before you start the installation.

The names of the application installation and data folders cannot have accented or non-ASCII characters.

File Content

		Guides	Setup Guide
		Draft Reconciliation	Draft Reconciliation User Guide
		FX	FX (Exchange Risks) User Guide
		Indicators	Indicators User Guide
		Installations	Setup Guides
		Liquidity	Liquidity User Guide
		Payment	Payment User Guides
		Other Documents	Course material and other previous documents sorted by language
		HotFixes	For this version
		New features	For this version
		History	Previous New Features Documents
		Products	Folder including the installation programs
		Tools	For the installation of the additional applications required for the smooth operation of Sage XRT Treasury
		Sage XRT Bank Format Library	Installation Program for Sage XRT Bank Format Library
		Sage XRT Common Services	Installation Program for Sage FRP Common Services
		Sage XRT Treasury	Installation Program for Sage XRT Treasury
		SEI	For Sage Enterprise Intelligence installation
		Guides	Setup Guide

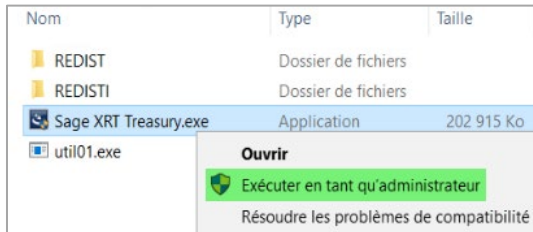
First Installation

First Installation

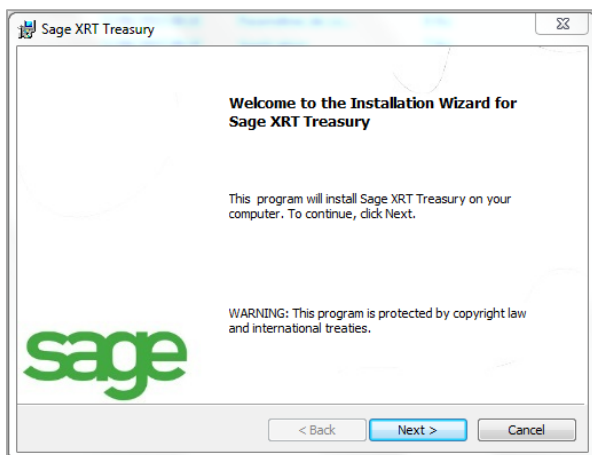
Before installing **Sage XRT Treasury 4.3. 0**, you must install **Sage XRT Common Services** and **Sage XRT Bank Format Library**.

Refer to their Setup Guides available in the **Guides** directory.

From the **Products** folder then **Sage XRT Treasury**, select **Sage XRT Treasury.exe**. Right-click it and launch it through the option **Run as administrator**.

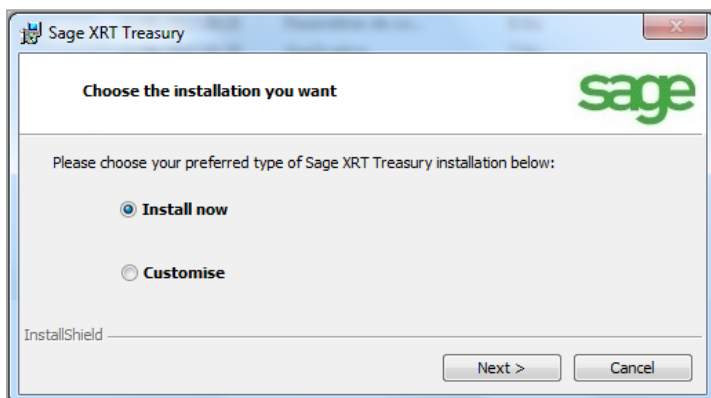


The **InstallShield Wizard** starts.



In the window **Welcome to the Installation Wizard for Sage XRT Treasury**, click **Next**.

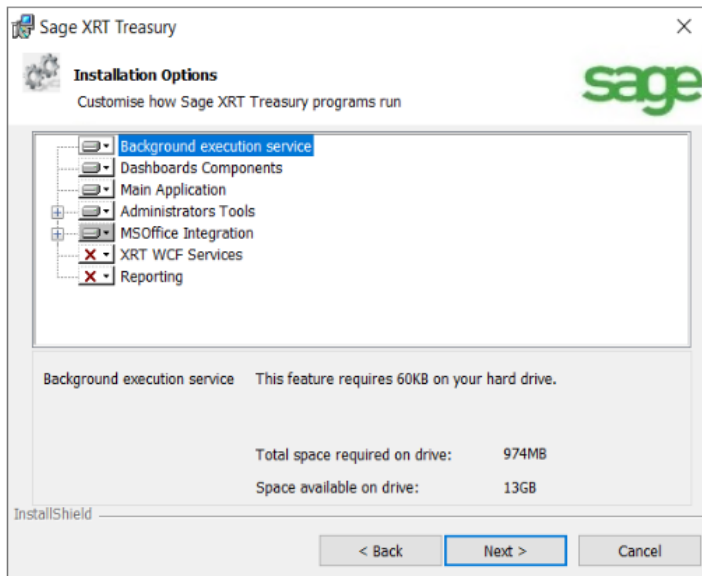
The following screen proposes two installation options.




First Installation

- **Install now:** This option corresponds to a standard installation.
- **Customise:** This option enables you to choose the modules to install and the installation locations.

In the **Customised** installation, clicking **Next** leads you to the following screen:

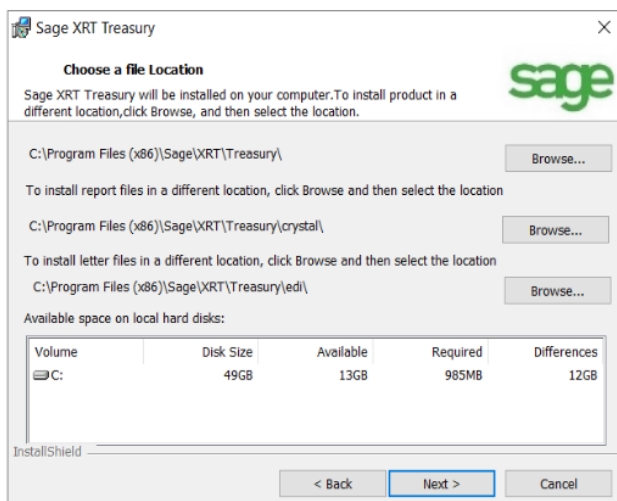


Note: **XRT WCF Services** include the service required for the smooth setup import/export and synchronization with **Sage XRT Advanced**.
Reporting is mandatory to use **Sage Enterprise Intelligence (SEI)**.

To disable the installation of an option, click the corresponding  icon and select **This feature will not be available**: this icon **X** is displayed as illustrated above.

Conversely, click **X**, then **This feature will be installed on local hard drive** to enable the programs you want.

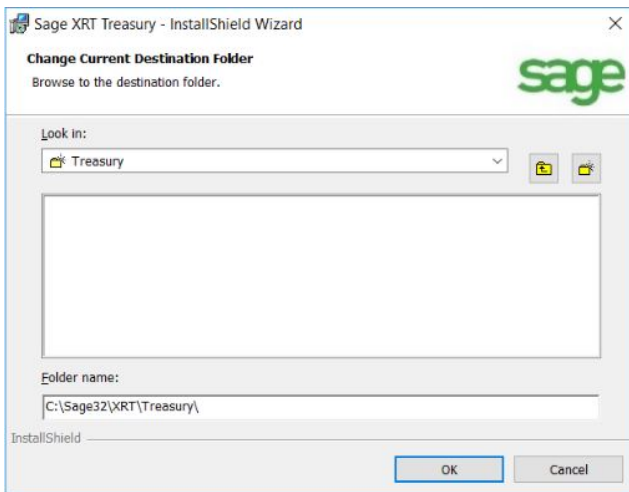
Click **Next**.



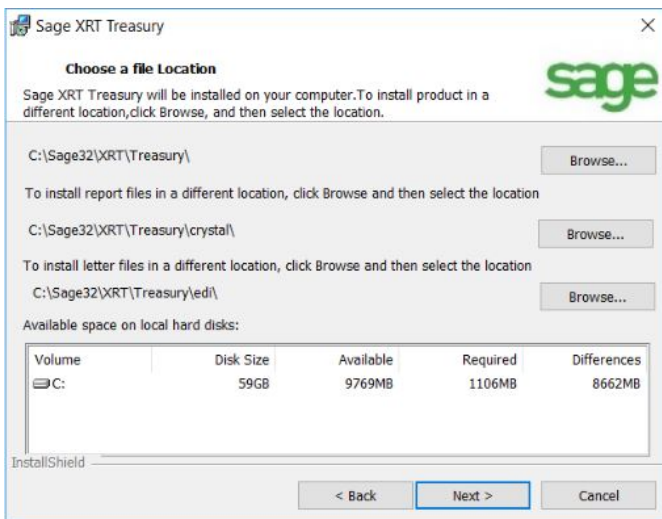
First Installation

To modify installation locations, click the **Browse** button.

Important! By default, the three paths specified on screen will be modified.



Select a disk drive (or another location) for the application installation and click **OK** to validate the selection.



Check whether your modifications appear or not on screen before proceeding.

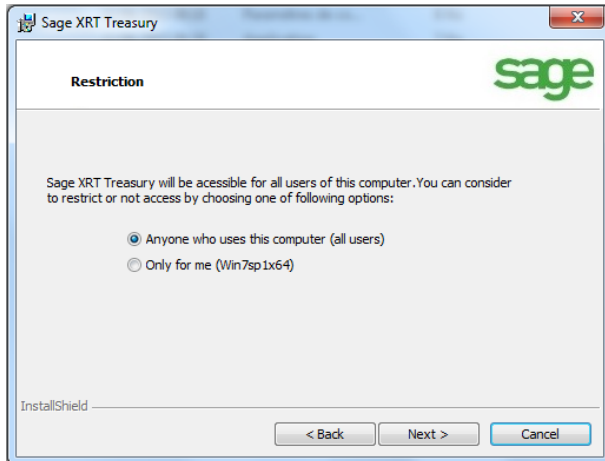
Click **Next**.

This screen enables you to set up the application access restrictions.

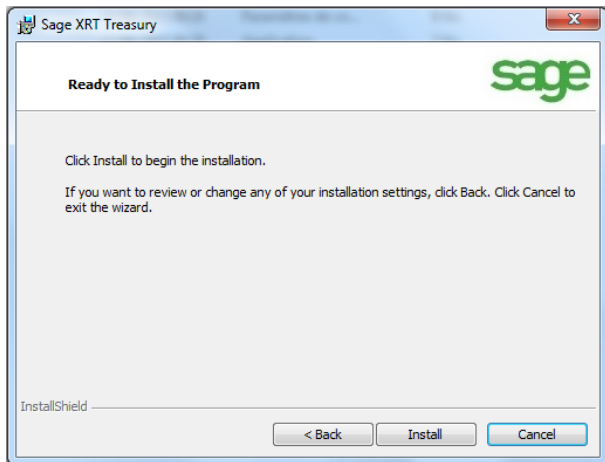
First Installation

There are two options:

- **Anyone who uses this computer (all users)** => all logged-in users can launch the application.
- **Only for me (xxxx)** => only the administrator currently installing the program, can launch the application.



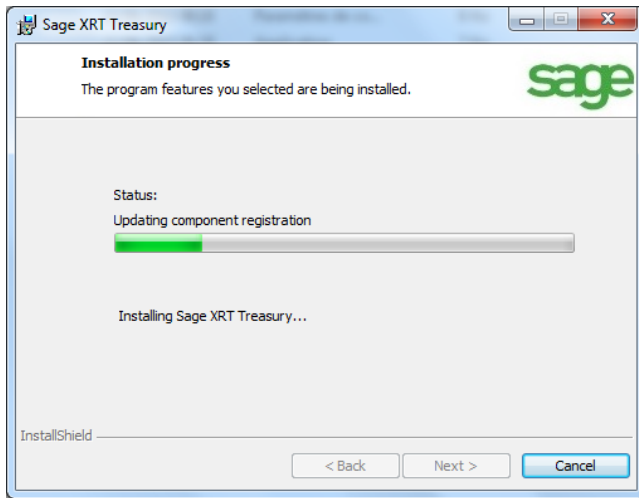
Click the **Next** button.



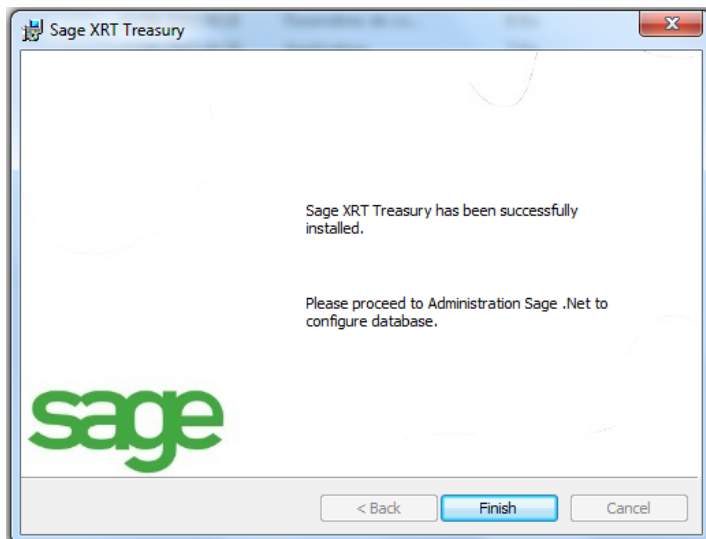
Click **Install** to continue or **Back** to go back to the previous screen.

First Installation

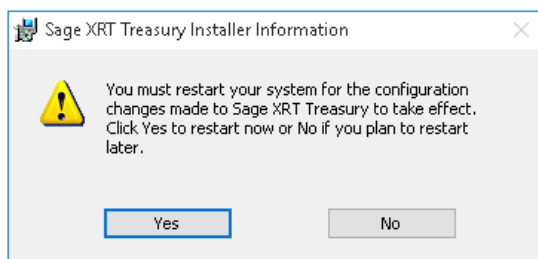
In the **Installation progress** window, a progress bar displays the installation progress.



In the window below, click the **Finish** button.



Once the installation is complete, click **Yes** to restart the computer.



Documentation

Creating Databases

To create a database, please refer to the *Setup Guide* for **Sage Common Services (SCS)** available in the **Guides** folder of your DVD.

Using an Existing Database

To update a database, please refer to the *Setup Guide* for **Sage XRT Common Services** available in the **Guides** folder of your DVD.

Creating User and Granting Privileges

To create and administrate user rights, please refer to the *User Guide* for **Sage XRT Common Services** available in the **Guides** folder of your DVD.

License Management

To add and modify product licenses, please refer to *User Guide* for **Sage XRT Common Services** available in the **Guides** folder of your DVD.

Updating Previous Versions

Although Update Mode is available, it is not completely stable. That is the reason why we recommend that you uninstall the previous versions of your **Sage XRT** applications before installing the new versions.

To uninstall the applications, the order is reversed:

1. **Sage XRT Treasury** 4.0.x
2. **Sage XRT Common Services** 3.9.20x or 5.0x
3. **Sage XRT Bank Format Library** 2.1.20x or 4.5x

Then install the new versions following the instructions from the above chapter in this order:

1. **Sage XRT Bank Format Library** 4.6.100
2. **Sage XRT Common Services** 5.1.103
3. **Sage XRT Treasury** 4.3.0

Important! Your **Sage XRT Common Services** and **Sage XRT Treasury** databases must be backed up before any modification.