



Sage XRT Treasury

Version 4.2.0

Setup Guide



Contents



Recommendations	3
File Content.....	4
First Installation	5
Documentation.....	12
Update installation.....	13

Recommendations

This document describes the installation process of **Sage XRT Treasury** v4.2.0.

Sage XRT Treasury is a 32-bit application.

However, this version is the first version fully and exclusively compatible with the 64-bit versions of **Sage XRT Bank Format Library** and **Sage XRT Common Services**.

Install **Sage XRT Treasury** products in the following order:

1. **Sage XRT Bank Format Library** v4.5.0
2. **Sage XRT Common Services** v5.0.5
3. **Sage XRT Communication** v4.2.0
4. **Sage XRT Signature** v4.2.0
5. **Sage XRT Treasury** v4.2.0

You must be the **Administrator** of the stations to perform installations.

The **User Account Control** of the station/server must be deactivated during installation.

You must have all privileges on folders related to **Sage XRT Treasury** application.



















Back up your data before upgrading any application.

Before **Sage XRT Treasury** installation, all other applications must be closed.

The database engine must be installed and activated before you start the installation.

The names of the application installation and data folders must not have accented or non-ASCII characters.

File Content

	Guides	Setup Guide
	Draft Reconciliation	Draft Reconciliation User Guide
	FX	FX (Exchange Risks) User Guide
	Indicators	Indicators User Guide
	Installations	Setup Guides
	Liquidity	Liquidity User Guide
	Payment	Payment User Guides
	Other Documents	Course material and other previous documents sorted by language
	HotFixes	For this version
	New Features	For this version
	History	Previous New Features Documents
	Products	Folder including the installation programs
	Tools	Installation programs for the additional applications required for the smooth operation of Sage XRT Treasury
	Sage XRT Bank Format Library	Installation Program for Sage XRT Bank Format Library
	Sage XRT Common Services	Installation Program for Sage FRP Common Services
	Sage XRT Treasury	Installation Program for Sage XRT Treasury
	SEI	For Sage Enterprise Intelligence installation
	Tools	Installation programs for the additional applications required for the smooth operation of Sage XRT Treasury

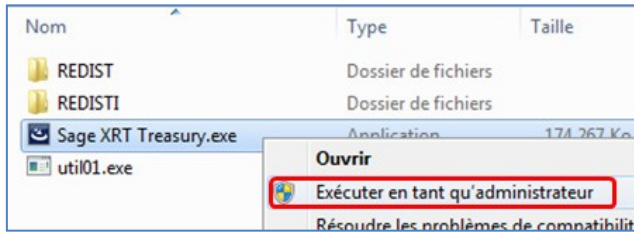
First Installation

First Installation

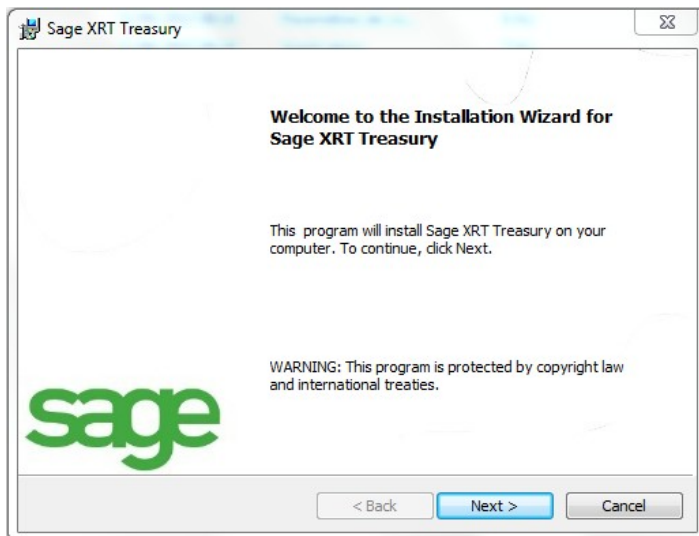
Before installing **Sage XRT Treasury v4.2.0**, you must install **Sage XRT Common Services** and **Sage XRT Bank Format Library**.

Refer to their installation guides available in the **Guides** directory.

1. From the **Products** folder then **Sage XRT Treasury**, select **Sage XRT Treasury.exe**. Right-click it and launch it through the option **Run as administrator**.



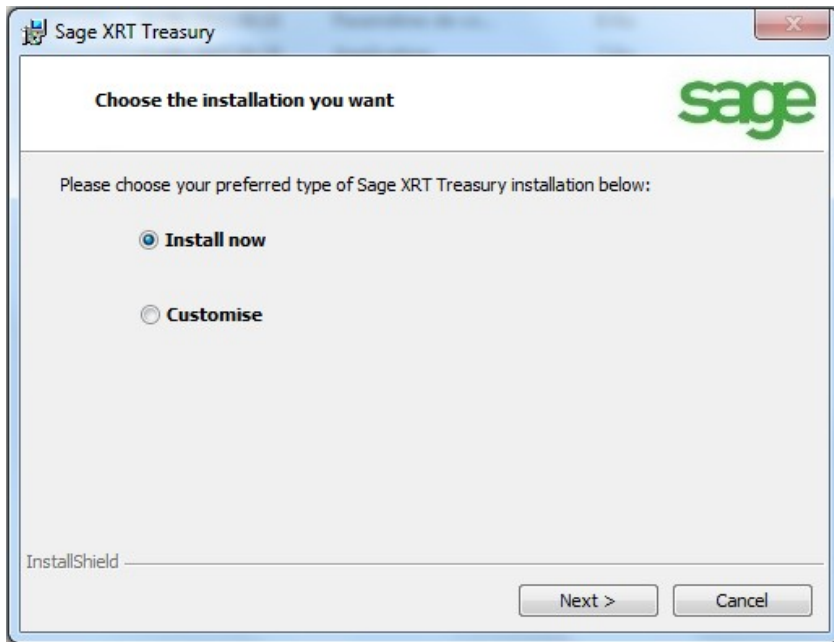
The **InstallShield Wizard** starts.



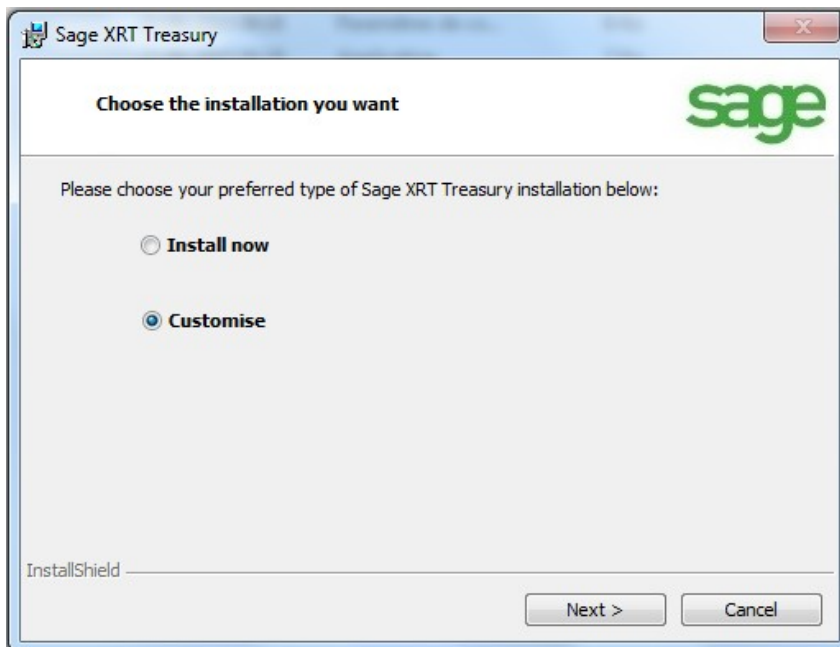
2. In the window **Welcome to the Installation Wizard for Sage XRT Treasury**, click **Next**.

First Installation

- The following screen proposes two installation options:
 - Install now:** This option corresponds to a standard installation.

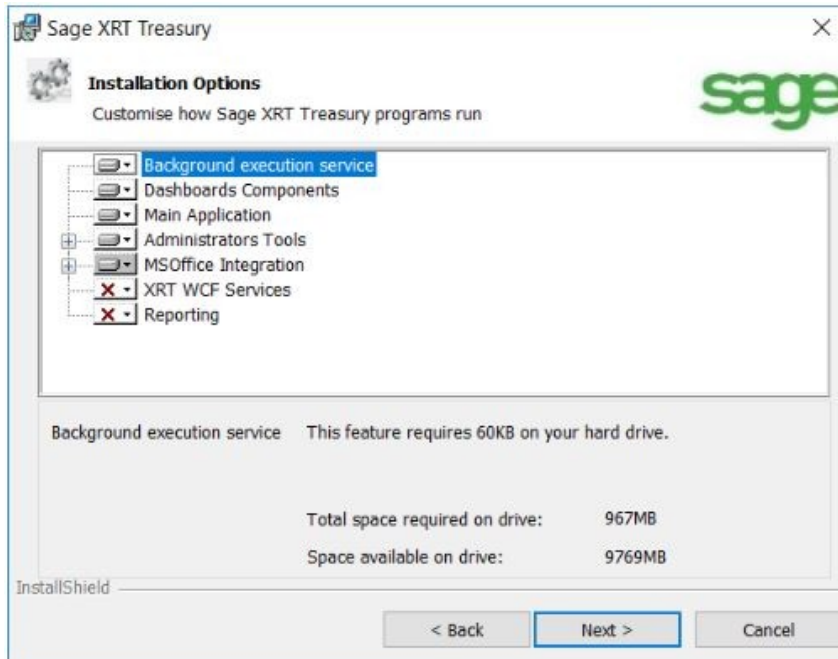


- Customise:** This option enables you to choose the modules to install and the installation locations.




First Installation

In the **Customised** installation, clicking **Next** leads you to the following screen:



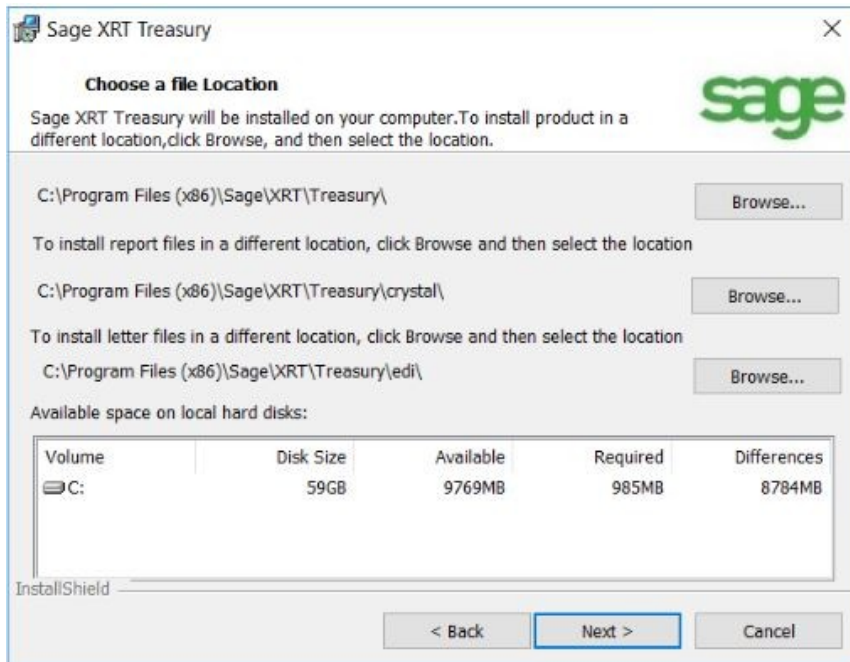
Note: **XRT WCF Services** include the service required for the smooth setup import/export and synchronization with **Sage XRT Advanced**. **Reporting** is mandatory to use **Sage Enterprise Intelligence (SEI)**.

To disable the installation of an option, click the corresponding  icon and select **This features will not be available**: this **X** icon is displayed as illustrated above.

Conversely, click **X**, then **This feature will be installed on local hard drive** to enable the programs you want.

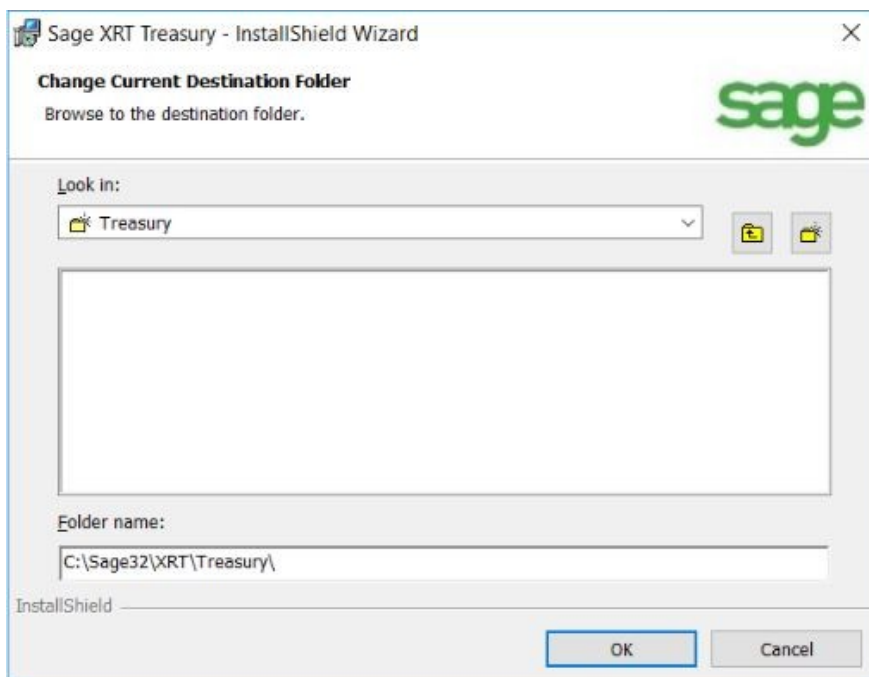
Click **Next**.

First Installation



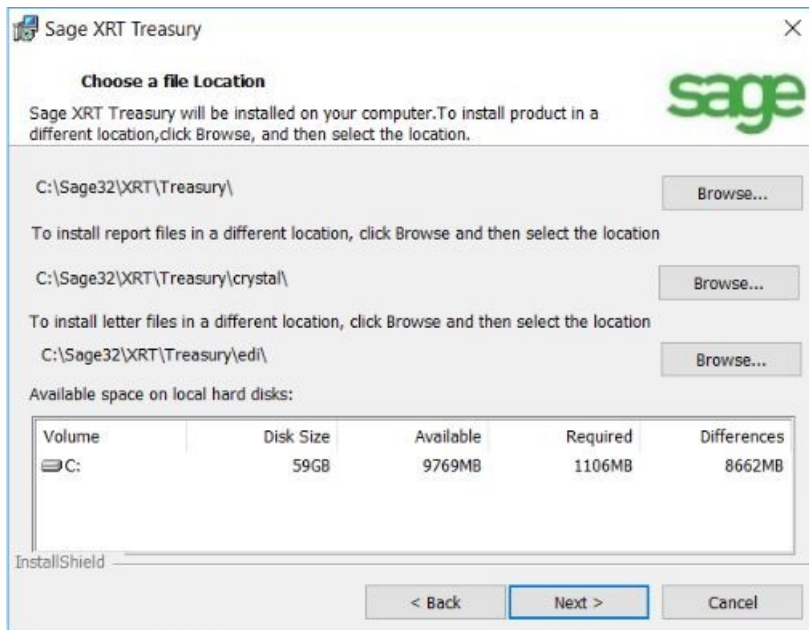
To modify installation locations, click the **Browse** button.

Important! By default, the three paths specified on screen will be modified.



Select a disk drive or another location for the application installation and click **OK** to validate the selection.

First Installation

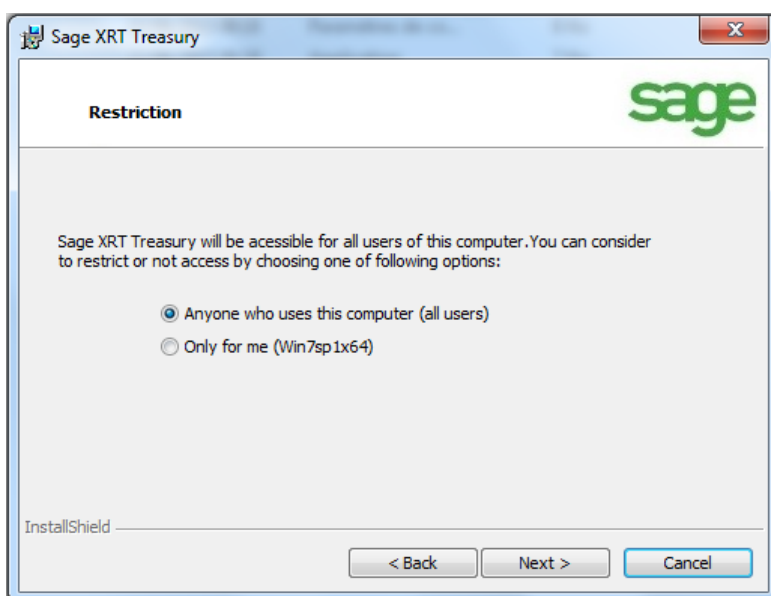


Check whether your modifications actually appear or not on screen before proceeding. Click **Next**.

4. This screen enables you to set up the application access restrictions.

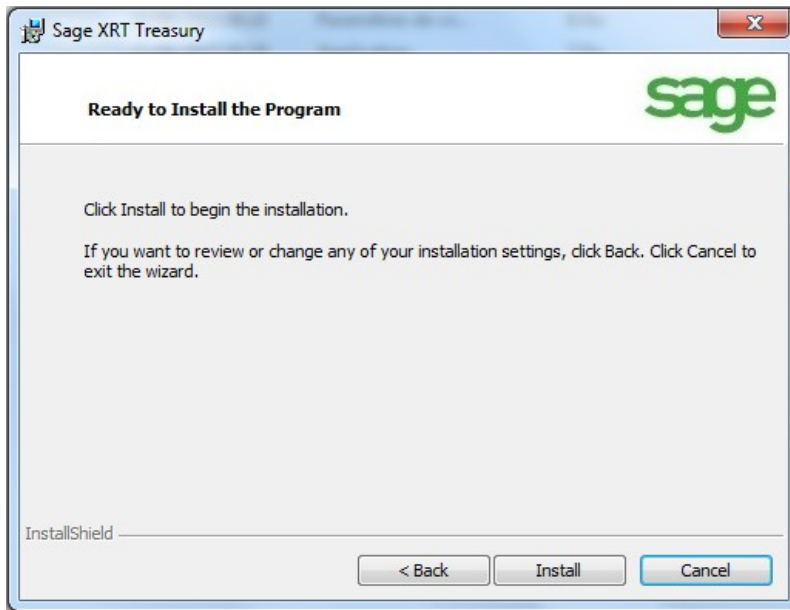
There are two options:

- **Anyone who uses this computer (all users)** => all logged-in users can launch the application.
- **Only for me (xxxx)** => only the administrator currently installing the program, can launch the application.



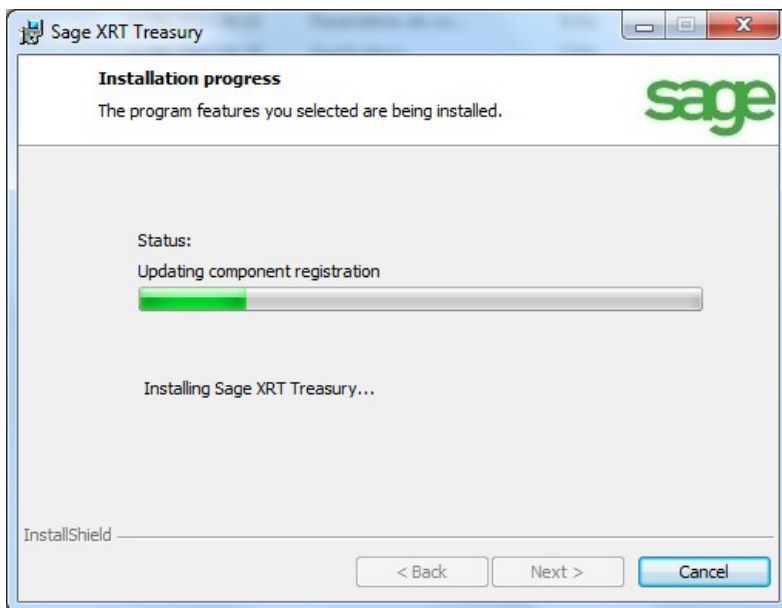
First Installation

Click the **Next** button.



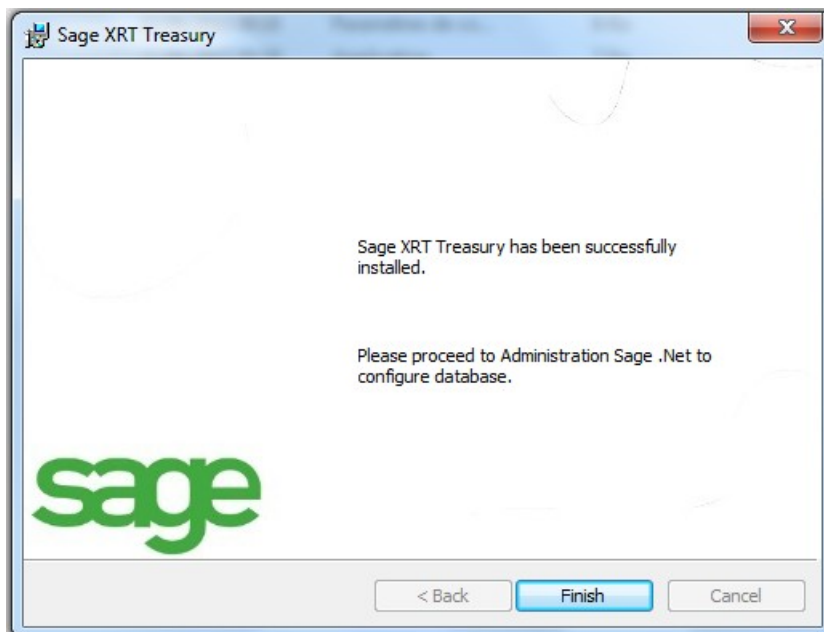
Click **Install** to continue or **Back** to go back to the previous screen.

In the **Installation progress** window, a progress bar displays the installation progress.

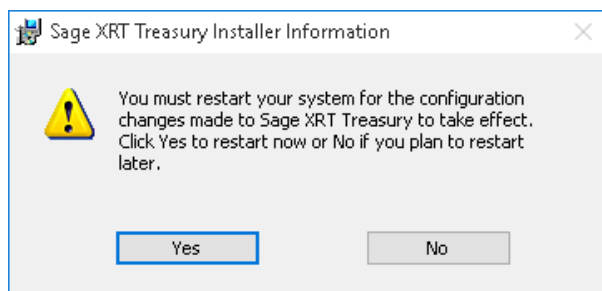


First Installation

5. In the window below, click the **Finish** button.



6. Once the installation is complete, click **Yes** to restart the computer.



Documentation

- **Creating Databases**

To create a database, please refer to *Sage Common Services Installation Guide (SCS)* available in the **Guides** folder of your DVD.

- **Using an Existing Database**

To use a database, please refer to *Sage XRT Common Services Installation Guide SCS* available in the **Guides** folder of your DVD.

- **Creating User and Granting Privileges**

To create and administrate user rights, please refer to *Sage XRT Common Services Operation Guide SCS* available in the **Guides** folder of your DVD.

- **License Management**

To add and modify product licenses, please refer to *Sage XRT Common Services Operation Guide (SCS)* available in the **Guides** folder of your DVD.

Update installation

Important! Your databases must be backed up (**Sage XRT Common Services** and **Sage XRT Treasury**) before the update.

Though the application can be installed in update mode, we recommend that you uninstall the previous versions of your Sage XRT applications before installing the new versions (following the instructions from the above chapter) in this order:

1. **Sage XRT Bank Format Library** v4.5.0
2. **Sage XRT Common Services** v5.0.5
3. **Sage XRT Treasury** v4.2.0

Note: To uninstall the applications, the order is reversed:

- **Sage XRT Treasury** v4.0.x
- **Sage XRT Common Services** v3.9.20x
- **Sage XRT Bank Format Library** v2.1.20x